

Hanney Community Plan

# 2011



# Welcome to the Hanney Community Plan

National and local government have encouraged villages to complete community and parish plans so that:

- The desires and preferences of the villagers are known to parish, district, county and national authorities to enable decision making and planning to be undertaken with an eye to the consensus view;
- Small local projects can be identified by the community and undertaken more quickly than by local authorities;
- Residents can prioritise projects so that the finance available can be used most effectively.

Parish and Community Plans have started to inform and influence strategic planning at all local authority levels.

This Community Plan sets out what our villages of East Hanney and West Hanney are and how they have developed. The Plan provides details of the consultation process and the inputs, particularly from a Questionnaire that was completed by over 90% of all households. The Plan contains proposed Projects and suggested related actions.

If the proposed Projects are not investigated and changes implemented, an opportunity will be missed to enhance the Hanney Community. Much of the work on the Projects will initially fall to the Parish Councils, and the Steering Group recommendations are contained in the Key Recommendations and Projects that follow.

## Contents

Welcome to the Hanney Community Plan

**Page 2** Key Recommendations and Projects

**Page 3** Our History

**Page 5** How We Live

**Page 7** Who We Are (Demographics)

**Page 8** Wildlife

**Page 9** The Community Plan Process

**Page 10** Questionnaire: The Significant Results

**Page 14** Projects

**Page 17** Acknowledgements

**Page 18** Map of East Hanney and West Hanney Parishes



## Available separately

**Appendix 1** - Full Questionnaire Results

**Appendix 2** - 'Other Comments' from the Questionnaire and Consultations

# Key Recommendations and Projects

The Steering Group recommendations are that the Parish Councils of East Hanney and West Hanney:

- Set up a Joint Co-ordinating Committee consisting of members of both Parish Councils with other villagers co-opted, if appropriate;
- Encourage the setting up of groups of volunteers (Working Groups) to undertake the proposed Projects;
- Appoint a member of the Joint Co-ordinating Committee to work with each Working Group initially; and
- Provide “seed funding” to each Working Group, as appropriate, to help with its initial work.

The Steering Group proposes that the following Projects with associated Working Groups be initiated:

- Hanney Carnival / Fête Group
- Hanney Young Persons Club Group
- Hanney Environment Group
- Hanney Cycle Path Group
- Hanney Technology Group

## Community Projects

- Enable the Hanney Community Shop & Sub-post office to achieve economic viability through offering a wider range of goods and services.
- Organise an annual Carnival or Fête.
- Set up a young persons’ social club.



## Environment Projects

- Provide a rubbish skip monthly for use by the community.
- Set up a local group to promote environment issues for the Hanneys.
- Publicise the existing bulb and tree planting arrangements.

## Communications Projects

- Undertake a review of pavements and the further provision of pavements at specific village locations with the aim of providing good continuous safe surfaces.
- Identify locations that may benefit from low-level street lighting to provide additional safety and security.
- Maintain public footpaths to a good useable standard.
- Provide a cycle path to Grove and later possibly another to Steventon.
- Reduce traffic speed in the villages.
- Investigate a weight restriction for vehicles entering East Hanney & West Hanney.
- Allay the safety concerns of villagers about the structural integrity of the road bridge over Letcombe Brook by Dandridge’s Mill.
- Investigate the feasibility of traffic management systems to provide better access to A338.
- Lobby the bus companies to provide a more regular service to local towns.
- Ensure a high quality Internet service is available.
- Parish Councils to offer an e-mail distribution service for their meeting agenda, minutes, notices and reports.
- Set up directories for ‘Services’ and ‘Clubs/ Societies’.

## Planning Projects

- Establish a Parish policy for the promotion of new housing conducive to improving the village in line with villagers’ preferences.
- Encourage the provision of more premises for employment opportunities.



# Our History

---

**E**ast Hanney & West Hanney form one ecclesiastical parish but are separate parishes for the purposes of local government. The 'ey' name ending first recorded in Saxon times, denotes their island position within the surrounding fen.

Nobody knows how long people have been settled here, but the archaeology of this part of Southern Oxfordshire (North Berkshire before 1974) suggests settlement from at least the Iron Age.

The first surviving written record is a charter of AD 956, which describes an area of land, virtually identical to the modern parish of East Hanney. In a later charter of AD 968, the Saxon King Edgar gave the land to Abingdon Abbey. This land would have been part of the Royal Manor of Wantage and as such, would have been of a well-established estate able to provide a good income and produce to support the Abbey.

West Hanney has no such surviving charters, but its boundaries are defined by similar charters for surrounding villages. It is likely that West Hanney was by this time an important church centre. Although the oldest surviving parts of the Church of St James the Great date only from about 1160 it is very likely that there was an earlier Saxon church on the site. It is now thought that the church was a minster, from which priests went out to other, churchless parishes. By the time of the Domesday Book in 1086 West Hanney Church was well established financially and had a priest named Tuold.



William the Conqueror gave West Hanney to one of his most important supporting barons, Walter Giffard. In his turn he gave half the land to support his Benedictine foundation at Newton Longueville in Buckinghamshire. East Hanney had at least three other manors in addition to the manor that belonged to Abingdon Abbey, so its history has always been difficult to unravel. One of these, the Manor of Philberts, had a church attached, which is first mentioned in 1260 although its site is uncertain.

In the later medieval period, Henry VI gave the West Hanney Longueville estate to New College Oxford. This ownership continued until 1956. East Hanney has been accustomed to more independence. The tenant farmers from an early stage seem to have played a considerable part in the development of the village. In East Hanney there is evidence of village reorganisation, both in the management and layout of the open fields, in the layout of the house plots and in the organisation of the water system. Water is

directed from Dandridges Mill throughout the village, providing water for dwellings, filling ponds for the watering of stock and then returning to the brook through the

north end of the village via a ditch known as Gods Ditch. In common with many communities, population was badly affected by the adverse conditions of the 14th century. There is evidence of village shrinkage along the Letcombe Brook. Government tax records show that both East Hanney and West Hanney were given tax rebates at the time of the Black Death - far more than other villages in the area, as they were unable to pay the demands.

# Our History

---

Village life continued very much based on agriculture. The land was good for arable crops and East Hanney had rich brook-side meadows for grazing. Each village had its trades and craftsmen who backed up this farming economy. In the 19th century census returns there is an account of occupations. There were several shops, bakeries, a post office, public houses, blacksmiths, wheelwrights, carpenters and thatchers in both villages; and in East Hanney, two functioning mills. East Hanney was closer to changes in transport, which opened up the area. The turnpike road (now A338) was built in 1776; a section of the Wilts and Berks canal from Wantage to Abingdon opened in 1810 and the Great Western Railway opened Grove Road Station in 1840.

The Wantage area, however, with its agricultural economy was badly hit by the agricultural depression of the late 19th century and two of the worst hit villages were East Hanney and West Hanney. The poverty of the villagers is difficult to imagine nowadays but government reports in 1895 detailed the misery of over-crowding and unsanitary conditions in a community where 10 shillings (50 pence) was the average weekly agricultural wage. Some villagers left for employment elsewhere and cottages which today would be highly prized decayed into the ground.

Attempts were made to improve conditions. In the 1830s the Pusey Estate gave a large area of land for allotments. Hanney School was the first joint village enterprise to be built in 1847 on the largest allotment. It took many years however before parents recognised that children benefited more from going to school rather than earning money to support their families. The Church played an increasing role with a major restoration of St James the Great Church in 1868, building a

new chapel of St James the Less in East Hanney in 1858 and attempting to tackle the problem of excessive drinking by opening a Temperance room with a laundry and a library. All this work was funded from the better-off families or by fund-raising in the villages.

This pattern of identifying need and raising money has continued until the present day. The trauma of the 1914-18 War, in which 29 village men died led to the building of the Victory Hut as a centre for activities for both villages. The present Hanney War Memorial Hall replaced the Victory Hut in 1969. The closure of the last bakery in East Hanney, the last two retail businesses in the villages and the loss of premises for a Post Office in 1988 led to the founding of the Hanney Community Shop. Numerous organisations have arisen from village endeavour and inspiration: sports clubs, drama group, Women's Institute, Hanney News, gardening club, local history group and many more. A recent example has been the Hanney Flood Group, recognised nationally as an example of local self-help and formed after the floods of 2007.

The constant evolution of our villages is a long history of community response to change and challenge. This is what makes this Hanney Community Plan such an exciting opportunity.



# How We Live

---

The Hanney Community has a population of about 1150. People from the villages have diverse occupations, working in local industry such as farming and the building trade and in service industries in Abingdon, Swindon, Oxford and elsewhere. A number of residents commute daily to London. The villages of East Hanney and West Hanney are situated in close proximity to Oxford University, Harwell, Rutherford, Culham and other major scientific establishments and so have been popular places for scientists, academics and other professionals to choose to live.

Many villagers belong to a variety of village clubs and organisations. There is also a wide range of sports facilities available. Many people have said that they have moved to the villages because they offer such a large and diverse number of social non-work related activities.

The community has its 'crown jewels' of church, chapel, school, village hall, pubs and a community shop with sub-post office. La Fontana Italian Restaurant, Dews Meadow Farm Shop and a small industrial park are located in East Hanney on the A338. Hanney Spice, a new Indian Restaurant has recently opened in the Lamb Inn in West Hanney.



A future challenge will be to preserve the Hanney Community Shop as a viable economic proposition. Fortunately there is one public house in business in each village; The Black Horse in East Hanney and The Plough in West Hanney. A number of villagers belong to The Royal British Legion and enjoy the social programme that is offered.



Each village has an area devoted to allotments and for the more strenuous amongst us tennis, football and cricket are played regularly.

The village hall, Hanney War Memorial Hall, was built and paid for by villagers and is extensively used by the large number of clubs and societies. Activities include a male voice choir, pilates, indoor sports, wine tasting, gardening, Guides, local history investigation, Women's Institute and a senior citizens club. The Hanney Drama Group has provided an annual show and a new film club is proving popular. The hall is often used for private events and celebrations.



In the community we are fortunate to have a few experts and a lot of gifted amateurs keen to promote biodiversity and environmental conservation. In addition to regular bulb and tree planting, the Community Woodland has been established. The local primary school has set up its own garden and received help from interested villagers.

A monthly newspaper, Hanney News, is delivered free to all residences in the villages. It contains the programme of village events, advertisements from local trades people and offers a forum for villagers to express their views on local issues.

The villages present attractive environments in which to live. Many families can trace their roots in

# How We Live



the villages back over many generations. Newcomers who make their homes here generally stay for a long time as the demographic information in this Plan

shows. The significant number of older people does present its own challenges for the future. There are areas of the village impassable or dangerous to use in a wheelchair. As they age some villagers may stop driving, so shopping by Internet and having a viable village shop will be important. The historic causeways can prove difficult for mothers with pushchairs as does the lack of suitable continuous pavements around the village hall and school.

West Hanney & East Hanney are low-lying and suffered severe flooding in 2007 and 2008. A Flood Prevention Group was formed and has worked hard to reduce the effects of future excess river flows. This group has been recognised as a first class example of local self-help.

East Hanney Parish is the fortunate owner of a small industrial estate that provides employment and a source of rental income.

This Plan has come at an opportune time for our local leaders to assess the future needs of the village population and take care to provide for them.



# Who We Are (Demographics)

During November 2010, all residents aged 12 or over in East Hanney & West Hanney were asked to complete a Questionnaire. The Questionnaire results have given a lot of information about the villagers (with a very high degree of confidence).

The results were as follows:

## Number of residences

East Hanney: 341 of which 326 were occupied

West Hanney: 214 of which 208 were occupied

## Questionnaires returned

East Hanney: 288 of 326 (88%)

West Hanney: 192 of 208 (92%)

The demographic information obtained from those residents who completed the Questionnaire was as follows:

## No. of residents

East Hanney: 563 (60% of the total)

West Hanney: 370 (40% of the total)

## Total no. of recorded residents (inc. under-12s)

East Hanney: 683

West Hanney: 448

## Gender of residents

East Hanney: Male 45%, Female 53%

West Hanney: Male 49%, Female 50%

No answers: EH (2%), WH (1%)

The age of the villagers viewed against the years that they have lived in The Hanneys are:

Ages	12-15	16-19	20-29	30-44	45-59	60-74	75+
Time living in the Hanneys							
< 1 year	2%	0%	3%	13%	5%	1%	0%
1-5 yrs	28%	22%	41%	39%	26%	9%	5%
6-10 yrs	35%	28%	11%	27%	19%	6%	3%
11-20 yrs	35%	50%	19%	13%	26%	16%	8%
21-30 yrs	0%	0%	27%	3%	14%	23%	13%
> 30 yrs	0%	0%	0%	6%	11%	46%	70%

## The age of the residents

	EH	WH	Male	Female
12-15	4%	5%	6%	3%
16-19	3%	4%	3%	4%
20-29	6%	1%	3%	4%
30-44	18%	22%	18%	21%
45-59	31%	28%	31%	29%
60-74	27%	29%	28%	28%
75+	11%	11%	10%	12%
No answers	11	8		

## Time resident in the Hanneys:

	EH	WH
< 1 yr	5%	5%
1-5 yr	23%	19%
6-10 yr	15%	16%
11-20 yr	19%	21%
21-30 yr	15%	11%
> 30 yr	23%	28%
No answers	8	3

## Some conclusions from the analysis of this demographic information are:

- There are slightly more females in the villages than males
- Nearly 40% of the responding population of the villages (excluding the under 12's [no data]) are aged 60+
- 38% of the population of the villages have lived here for over 20 years
- Of those who are aged 75 or over, 70% of them have lived in the villages for over 30 years

# Wildlife

The area in and around the Hanneys is biologically rich and diverse. For example, at least two hundred and eleven species of wild flowers, twenty-eight grasses, thirty-two trees and shrubs, one hundred and ten birds, twenty-four mammals and twenty-three species of butterflies have been recorded.

Most of the area of the two villages is either arable land or 'improved' grassland but close to the villages there are several places, which are more botanically diverse. The meadows of Weir Farm still contain many of the species characteristic of old hay meadows and the large field between the school and West Hanney, which was originally arable, has been in set-aside and subsequent environmental schemes for over 20 years and has developed a very varied flora, including bee orchids. On the western side of the green lane running from opposite the school towards Grove (Cow Lane) is an area planted as 'Community Woodland', which has a variety of trees and shrubs and abounds in spring and summer with nesting birds such as Willow Warblers and with Marbled White and other butterflies.

A survey by the Hanney History Group of all the hedgerows in West Hanney showed that some of the hedges, particularly those on the parish boundary contained up to 10 species of woody plants, suggesting that they are many centuries old; as is probably true for East Hanney. The churchyard at West Hanney provides a relatively undisturbed habitat and some species of plants rare elsewhere in the villages, such as Lady's Bedstraw can be seen. The banks either side of the church path, which are kept closely mown, have a very varied flora including Hoary Plantain. Spotted Flycatchers sometimes nest and feed in the churchyard and Swifts nest in the church roof. In early summer a large flock of Swifts often screams around the church and nearby.

Many species of birds which are said to be in decline, such as Skylark, Song-thrush and Grey Partridge appear to be thriving locally. Red Kites, once a national rarity, have spread out from a re-introduction programme in the Chilterns and are now seen daily over the villages and they are known to nest locally. Sadly, Cuckoos have been less frequently heard in the last few years.

During the late autumn and winter large flocks of Redwings and Fieldfares descend on the area. Initially they feed on berries and crab-apples but, after Christmas they can be seen feeding on grassland, including the playing fields. Other birds, which are normally regarded as summer migrants, are now present in winter. These include Blackcaps in gardens and Chiffchaffs calling in various scrubby places.



Despite recent necessary work to clear vegetation from the Letcombe Brook, Mallards and Moorhens are still present and nest. Occasionally Little

Grebes put in an appearance and Kingfishers are sometimes seen. However, Water Voles, which used to be regularly seen, have now virtually disappeared, probably due to predation by Mink. Most common species of mammals are present, from Pygmy Shrews to Roe and Muntjac deer. Sadly Badgers are mostly seen only as a road casualty.



# The Community Plan Process

East Hanney & West Hanney Parish Councils advertised for individuals to come forward and compile a Community Plan for the benefit of villagers. Oxfordshire Rural Community Council (ORCC) agreed to assist as it has experience of guiding other parishes and has recommended processes for developing such plans.

In October 2009, a meeting was held in the Hanney War Memorial Hall when more than 120 villagers attended. They received presentations



and explanations of the benefits of Community Plans from Anton Nath, a representative of ORCC, Terry Cox, District Councillor and Iain Brown, County Councillor. Villagers were asked to provide information on the features of village life that they particularly liked; those features that they did not like; and new facilities or services that they would like to have.

This information was collected along with the contact details of villagers willing to help. In January 2010, a Steering Group ('the SG') and five sub-committees were formed. The sub-committees covered **Environment, Social, Communication, Community and Planning** issues raised by villagers at the October meeting. Each sub-committee formulated possible questions for a future questionnaire. In addition, members of the sub-committees raised further issues. The five sub-committees submitted their questions to a Questionnaire Sub-Committee.

While this activity was continuing, various members of the SG also attended village clubs and societies to offer information on the Plan process and progress. Excepting July 2010, every edition of Hanney News from January 2010 has contained information, articles or inserts about

the Community Plan. In 2010, two other public events took place; in June a meeting took place of all the organisations which use the village hall; and in July all villagers had an opportunity to quiz the five sub-committees and view the prospective questions. The SG agreed the content of each Questionnaire question. The

result of this consultation was the formulation, then distribution of a Questionnaire to every household in both villages for everybody aged 12 and over to complete. This

Questionnaire was the culmination

of the consultation process and a return of 92% completed forms for West Hanney; 88% for East Hanney; and 90% overall is a testament to the distribution and collection process. In addition to the information contained in the replies to the questions, there were 168 entries in the 'Other Comment' box at the end of the Questionnaire, which were also considered by the SG when analysing the data. These comments are contained in Appendix 2.

The response from villagers wishing to volunteer has been sensational. 194 individuals have offered their time to help with, for example, organising a fete, helping with the pre-school group, litter collection, tree and bulb planting and footpath maintenance.

In May 2011 there was a presentation of the draft of the Community Plan Projects to the villagers to seek out any further comments.

The Parish Councils have given grants of £250 (WHPC) and £500 (EHPC) respectively. In addition, the SG obtained £1,370 from the ORCC and £1,000 from the Oxford Community Foundation. The Steering Group wish to thank all of these organisations as, without the funds, the Community Plan could not have been completed.

# Questionnaire: The Significant Results

There were 56 questions in the Questionnaire delivered to all households in East Hanney and West Hanney. The replies to these questions and comments have been analysed. As expected, there were a number of issues, with which the villagers were content. For other issues, there was no consensus for any action. Finally there were replies that indicated areas of real concern and calls for action. This section of the Community Plan sets out the responses to those questions that the Steering Group, after analysis, considered important, leading to the recommended Projects and actions. The Parish Councils will progress these Projects, with the help of volunteers, on the villagers' behalf.

The Projects and suggested actions that follow in the next section of the Plan are developed from these significant results, the consultation process and the majority views of the Steering Group members. The Projects, therefore, only include the issues that have proved to be the most significant to take forward from the villagers' collective viewpoint. Clearly, some villagers will have felt very strongly about an issue not included here but their view was a minority one. The full results of all of the questions are contained in a separate Appendix to this Plan. This Appendix (1), a further Appendix (2) collating villagers' comments and the Community Plan have been placed on [www.thehanneys.org](http://www.thehanneys.org) village website. The Plan is available from the Hanney Community Shop for £2. Except where it is stated, the total number of answers was 933 (East Hanney 563, West Hanney 370).

## Hanney Community Shop & Post Office

**Q10.** Would you use the Hanney Community Shop more often if it stocked a wider range of goods?

	Total	EH	WH
Yes	51%	50%	52%
No	44%	46%	41%
No answer	5%	4%	7%

## Litter & waste

**Q13.** Would you use a rubbish skip if one were sited in your village every month?

	Total	EH	WH
Yes	69%	69%	68%
No	28%	28%	29%
No answer	3%	3%	3%

## Pavements

**Q14.** Are the village pavements wheelchair/ pushchair friendly?

	Total	EH	WH
Yes	28%	31%	24%
No	54%	50%	59%
No answer	18%	19%	17%

**Q15.** Would you like pavements provided where there are not any currently available?

	Total	EH	WH
Yes	48%	46%	52%
No	41%	43%	39%
No answer	11%	11%	9%

## Public footpaths

**Q16.** Do you use the public footpaths in and around East Hanney or West Hanney?

	Total	EH	WH
Yes	91%	91%	91%
No	8%	7%	8%
No answer	1%	2%	1%

## Cycle paths

**Q19.** Would you use a cycle path to Grove?

	Total	EH	WH
Yes	56%	59%	53%
No	41%	39%	44%
No answer	3%	2%	3%

### Roads and speed limits

**Q21.** Would you support measures to reduce speed in the villages to 20mph?

	Total	EH	WH
Yes	56%	58%	51%
No	41%	38%	47%
No answer	3%	4%	2%

**Q22.** Are you supportive of a weight restriction for roads in East Hanney & West Hanney?

	Total	EH	WH
Yes	80%	79%	81%
No	17%	18%	15%
No answer	3%	3%	4%

**Q23.** Are you concerned about heavy vehicles using the bridge by Dandridge's Mill?

	Total	EH	WH
Yes	79%	78%	81%
No	17%	19%	16%
No answer	4%	3%	3%

**Q24.** Would you support traffic management systems to assist entry and exits to A338?

	Total	EH	WH
Yes	53%	53%	52%
No	44%	42%	46%
No answer	3%	5%	2%

### Buses

**Q25.** If the stopping bus services to local towns were more frequent would you use them more often?

	Total	EH	WH
Yes	38%	36%	41%
No	57%	59%	53%
No answer	5%	5%	6%

This Question is included as the demand is significant.

### Internet & Web-Site

**Q28.** Do you use a Broadband Internet connection at home?

	Total	EH	WH
Yes	79%	80%	79%
No	19%	18%	20%
No answer	2%	2%	1%

### Village communications

**Q30.** Would you like to be on a Parish Council e-mail distribution list to be informed about their actions and decisions?

	Total	EH	WH
Yes	41%	43%	39%
No	53%	50%	56%
No answer	6%	7%	5%

**Q31.** Would you find it useful to have a directory of village firms and individuals offering services?

	Total	EH	WH
Yes	73%	75%	70%
No	22%	21%	24%
No answer	5%	4%	6%

**Q32.** Would you find a directory of the officials of village clubs, societies etc. useful?

	Total	EH	WH
Yes	65%	66%	63%
No	30%	30%	31%
No answer	5%	4%	6%

### Street lighting

**Q33.** Would you like a small amount of low intensity lighting at vulnerable locations in the villages?

	Total	EH	WH
Yes	56%	60%	51%
No	41%	37%	47%
No answer	3%	3%	2%

### Investment in your environment

**Q34.** Which of these would you enjoy having?

	Total	EH	WH
	1,712	1,009	703
Village pond	25%	25%	26%
Tree planting schemes	34%	34%	35%
Bulb planting schemes	33%	34%	32%
No answer	8%	7%	7%



## Green policy

**Q35.** Would you support the formation of a local group to promote green activities for the Hanneys?

	Total	EH	WH
Yes	52%	54%	49%
No	33%	33%	33%
No answer	15%	13%	18%



## Planning

**Q36.** If further properties were to be built, which of the following would you prefer?

	Total	EH	WH
No. of answers: 1,742 (multi-choice)			
1-2 bedrooms	23%	23%	24%
3-4 bedrooms	24%	24%	24%
5 or more bedrooms	8%	9%	8%
Shared equity/ownership	12%	13%	10%
Public social rented homes	8%	8%	9%
Private sector rented homes	5%	3%	6%
Retirement/sheltered accom	20%	20%	19%

**Q37.** Are you concerned about the impact of new housing in the villages?

	Total	EH	WH
Yes	71%	70%	72%
No	27%	28%	27%
No answer	2%	2%	1%

**Q38.** (from Q37.) Are you concerned about?

	Total	EH	WH
<b>No. of answers: 2,782</b> (multi-choice)			
Increased traffic	20%	19%	22%
Changing the villages' character	19%	19%	19%
Infilling between properties	14%	14%	14%
Sub-division of gardens	12%	12%	12%
Extending villages' boundaries	14%	14%	14%
The size of developments	21%	22%	19%

**Q39.** Should preference for low-cost homes be given to people who have existing family or other close connections with the Hanneys?

	Total	EH	WH
Yes	74%	77%	70%
No	16%	15%	18%
No answer	10%	8%	12%

**Q40.** Would you support additional premises for business/employment in the villages?

	Total	EH	WH
Yes	54%	56%	51%
No	39%	37%	41%
No answer	7%	7%	8%

**Q41.** Should this be? (following from Q40.)

	Total	EH	WH
New buildings	23%	26%	18%
Conversion of existing buildings	50%	52%	48%
No answer	27%	22%	34%

**Q42.** Are you concerned about the impact of additional premises for business use?

	Total	EH	WH
Yes	56%	54%	59%
No	37%	39%	34%
No answer	7%	7%	7%

**Q43.** (from Q42.) Are you concerned about?

	Total	EH	WH
<b>No. of answers: 1,191</b> (multi-choice)			
Increase of commercial traffic	42%	41%	43%
Infilling between properties	29%	29%	28%
Extending villages' boundaries	29%	30%	29%

**Q44.** Which of the following concern you?

	Total	EH	WH
<b>No. of answers: 2,887</b> (multi-choice)			
<b>Flooding risk from Grove</b>			
& Wantage development	19%	20%	17%
The proposed reservoir	17%	18%	15%
Volume of traffic using A338	9%	10%	7%
Speed of traffic using A338	9%	9%	8%
Access from E Hanney to A338	10%	10%	9%
'Rat run' traffic in the villages	18%	16%	22%
Traffic speed in the villages	17%	16%	21%
None of the above	1%	1%	1%

## People issues

**Q46.** Are there enough entertainment/meeting facilities for young people aged 12 to 18?

	Total	EH	EH12-19	WH	WH12-19
Yes	12%	12%	15%	13%	3%
No	56%	58%	83%	53%	85%
No answer	32%	30%	2%	34%	12%

**Q47.** Should the Hanneys organise an annual Carnival or Village Fete?

	Total	EH	WH
Yes	66%	67%	63%
No	18%	17%	21%
No answer	16%	16%	16%

**Q48.** Would you encourage setting up a young persons' social club in the village hall?

	Total	EH	WH
Yes	67%	68%	66%
No	15%	15%	14%
No answer	18%	17%	20%

**Q50.** Would you support one Parish Council for both villages?

	Total	EH	WH
Yes	55%	56%	52%
No	30%	30%	30%
No answer	15%	14%	18%

**Q51.** Improvements cost money so priorities sought

**No. of answers:2,725** (multi-choice)

	%	Ranking	EH	WH
Cycle paths	11.27%	1	1	1
Street lighting	10.31%	2	2	3
Traffic calming	9.36%	3	3	2
Rubbish skip	7.08%	4	4	4
Footpaths	6.31%	5=	8	6
Community shop	6.31%	5=	6	8=
Carnival/Fête	6.02%	7	5	
Young pers' soc. cl.	5.91%	8	7	10
Pavements	5.76%	9	9=	5
Young people	5.28%	10	9=	7
Tree planting	5.79%			8=



## Other comments

In the Questionnaire there was an 'Other Comments' box. All of the comments from those boxes are contained in Appendix 2, which is available on [www.thehanneys.org](http://www.thehanneys.org) village website. Below are some of the proposals and anxieties stated by villagers.

## Proposals

- Cash dispensing machine
- Energy generation (solar panels)
- An exercise (Trim) trail
- More allotments
- Public toilets

## Anxieties

- Bus fares
- Disabled access to village amenities
- Dog fouling
- Helicopter noise



# Projects

**This section of the Community Plan lists each of the Projects proposed by the Steering Group based on the Questionnaire results. Against each Project the Steering Group has included;**

- Some of the Actions that may be necessary to make the Project work ['Suggestions'];
- A Priority ['P'] - how important the Steering Group feels the Project to be; together with the question number ['Q'] in the Questionnaire;
- A suggested name for a village Working Group to work on the Project;
- Comments that the Steering Group feels are relevant.

PROJECT	SUGGESTIONS	Ps&Qs	WORKING GROUP	COMMENTS
<b>Hanney Community Shop &amp; Post Office</b> 1. Achieve economic viability through offering a wider range of goods and services.	Consider: <ul style="list-style-type: none"> <li>• Enlarging the existing premises or re-organising the space.</li> <li>• Building or acquiring larger premises.</li> <li>• Enlisting the services of a retail consultant to suggest ways to improve shop profitability.</li> </ul>	<b>High</b>  Q8/Q9/ Q10	Hanney Community Shop Committee.	The Hanney Community Shop is a crown jewel of the villages. The shop can only succeed in the long-term if it is economically viable.
<b>Carnival or Fête</b> 2. Organise an annual Carnival or Fête.	Parish Councils to provide initial 'seed' funding.	<b>Medium</b>  Q47	Hanney Carnival/Fête Group.	Two-thirds of villagers would like an annual fête and 81 have volunteered to help.
<b>Young Persons' Club</b> 3. Set up a young persons' social club.	Identify & recruit a Young Persons' Club leader.  Parish Councils to provide initial 'seed' funding.	<b>High</b>  Q46/Q48	Hanney Young Persons' Club Group (to include young people).	There is a demand from young adults in the 12-19 age group. 24 adults have volunteered to help.
<b>Litter &amp; waste</b> 4. Provide a rubbish skip monthly for the community.	Extend existing East Hanney skip arrangements to include West Hanney locations and greater frequency.  East Hanney & West Hanney Parish Councils to agree on monthly 'split' and sites.	<b>Medium</b>  Q13	Parish Councils.	The facility should be publicised better.
<b>Green/Environment village matters</b> 5. Set up a local group to promote environment issues for the Hanneys.	Parish Councils to provide initial 'seed' funding.	<b>Low</b>  Q35	Hanney Environment Group.	38 villagers volunteered to contribute to a 'Green' agenda for the villages.

# Projects

PROJECT	SUGGESTIONS	Ps&Qs	WORKING GROUP	COMMENTS
<b>Bulb &amp; tree planting</b> 6. Publicise the existing bulb and tree planting arrangements.	New Hanney Environment Group to advise and organise future planting.  Parish Councils to make annual grant to the Hanney Environment Group for tree and bulb planting.	<b>Low</b> Q34	Hanney Environment Group.	59 villagers volunteered for bulb planting and 52 for tree planting.
<b>Pavements</b> 7. Undertake a review of existing pavements and the further provision of pavements at specific village locations with the aim of providing good continuous safe surfaces.	Conduct surveys of existing pavements and produce a report for Parish Councils' consultation with Oxfordshire County Council.	<b>Medium</b> Q14/Q15	Parish Councils.	Some pavements are poor for walking, others unsuitable for pushchairs and wheelchairs.
<b>Street lighting</b> 8. Identify locations that may benefit from low-level street lighting to provide additional safety and security.	The Parish Councils to consult with villagers to identify vulnerable locations.	<b>Medium</b> Q33	Parish Councils.	There are a small number of locations that would be safer if lit up.
<b>Public footpaths</b> 9. Maintain public footpaths to a good useable standard.	Maintain the footpaths and have good working relationships with affected landowners.	<b>Low</b> Q16	Parish Councils.	The footpaths are many in number and widely used. Regular maintenance will make them easier and pleasanter to use.
<b>Cycle paths</b> 10. Provide a cycle path to Grove and later possibly another to Steventon.	Hanney Cycle Path Group to identify a route for consultation with relevant authorities.	<b>Medium</b> Q19	Hanney Cycle Path Group.	East Hanney & West Hanney Parish Councils together have already started this project.
<b>Roads &amp; speed limits</b> 11. Reduce traffic speed in the villages.	Discuss the way forward with the local community police officer and the Highways Authority.	<b>High</b> Q21	Parish Councils.	Many villagers would like a speed limit of 20mph. Others would be happy if the current 30 mph were enforced.
<b>Road weight restriction</b> 12. Investigate the feasibility of a weight restriction for vehicles entering East Hanney & West Hanney.	Discuss proposition with County and District Councils.	<b>Medium</b> Q22	Parish Councils.	Some heavy and large vehicles should have their access restricted from unsuitable roads in the villages.
<b>Dandridge's Mill Bridge</b> 13. Allay the safety concerns of villagers about the structural integrity of the road bridge over Letcombe Brook by Dandridge's Mill.	Publish the statement from Oxfordshire County Council Highways on the state and weight capacity of the bridge.	<b>High</b> Q23	East Hanney Parish Council.	The bridge has been checked recently and found to be safe. This information should be publicised.

# Projects

PROJECT	SUGGESTIONS	Ps&Qs	WORKING GROUP	COMMENTS
<b>Access to A338</b> 14. Investigate the feasibility of traffic management systems to provide better access to A338.	Discussions to take place between EHPC & Oxfordshire County Council Roads Division.	<b>Medium</b> Q24	East Hanney Parish Council.	Moving from East Hanney on to A338 at all 3 locations can be hazardous and time consuming.
<b>Buses</b> 15. Lobby the bus companies to provide a more regular service to local towns.	Meet with local bus company representatives to provide details of village transport needs.	<b>Low</b> Q25	Parish Councils.	More people would use buses if they were more frequent and routed to more village and town locations.
<b>Technology</b> 16. Ensure a high quality Internet service is available.	Ensure that all Internet users in the villages register for BT Infinity. Lobby BT to accelerate BT Infinity in the local exchange.	<b>Low</b> Q28	Hanney Technology Group.	A very high % of villagers use the Internet.
<b>Technology</b> 17. Parish Councils to offer an e-mail distribution service for their meeting agenda, Minutes, notices and reports.	Databases to be created that provide for easy communication by Parish Clerks. Put Parish Council's papers on the village website.	<b>Medium</b> Q30	Parish Councils.	This will increase involvement of interested villagers with the Parish Council.
<b>Technology</b> 18. Set up Directories for 'Services' & 'Clubs/Societies'	Initial Directories to be compiled by volunteers. Directories to be maintained by volunteer(s). Improve the village website.	<b>Low</b> Q31/Q32	Hanney Technology Group.	The existing listings are incomplete.
<b>New building policy (residential)</b> 19. Establish a Parish policy for the promotion of new housing conducive to improving the village in line with villagers' preferences.	Each Parish Council to carry out a 'Housing Needs Survey' to gain the views of their villagers and establish a policy to supply suitably sized housing for its present and future needs.	<b>Medium</b> Q36/Q37/ Q38/Q39	Parish Councils.	A 'Housing Needs Survey' is a good way to gain information.
<b>Building &amp; site policy (commercial)</b> 20. Encourage the provision of more premises for employment opportunities.	Develop policies to encourage new employment in the villages by: <ul style="list-style-type: none"> <li>change of use of existing property;</li> <li>new commercial premises.</li> </ul> Identify prospective new commercial sites.	<b>Medium</b> Q40/Q41/ Q42/Q43	Parish Councils.	Concerns were raised in the Questionnaire about the impact of new businesses and increase in commercial traffic.

# Acknowledgements

---

**On behalf of all villagers, the Steering Group thanks those individuals and organisations listed below for their help in producing this Community Plan:**

## **Steering Group Members**

Chris French (Chairman & Secretary), Patrick Karney (Treasurer), Derek Hockaday, Michael Mills, Gill Parry, Rosi Rollings, Jim Triffitt (EHPC), Eddie Wilkinson (WHPC).

## **Sub-committee members**

David Blomley, Guy Brenchley, Miri Brundrett, Amanda Clarke, Steven Clarke, Fiona Derrick, Max Derrick, Ann Fewins, Clive Fewins, Marian French, Sarah Gooding, Tony Hogg, Alisa Hughes, Michael Hutchings, Dudley Iles, Jason Kent, Geoff Lunn, Clive Manvell, Philippa Manvell, Stephen Moss, Bob Neville, Bob Pritchard, Gwyn Pritchard, Vicki Ruston, Stewart Scott, Jim Stagg.

## **Questionnaire distributors and collectors**

Delia Blomley, Debbie Bough, Jane Bradley, Joanna Brettell, Trevor Brettell, David Carey, Angela Cousins, Eve Holding, Penny Iles, Catriona Karney, Nigel Kilbey, Judy Long, Amanda Menhams, Patricia Mills, David Parry, Geoff Phillips, Jo Pope, Richard Pope, Sam Rollings, Bob Spencer, Chris Surman, Martin Trowell, Tracey Underwood, Margaret Vivian, Sharon Wilkinson, Bob Wilson, Liz Woodhouse.

**Many members of the Steering Group and the Sub-committees also acted as Questionnaire distributors and collectors.**

## **Special thanks to**

Helen Cavendish (Appendix 2), Keith Diment (photographs, graphics & printing), Ann Fewins (Our History article), Philippa Kendall (design of Plan), David Price (sound & vision technology), Marc Sacco (Website), Paul Sayers (Wildlife article), Hugo Shelton (Questionnaire).

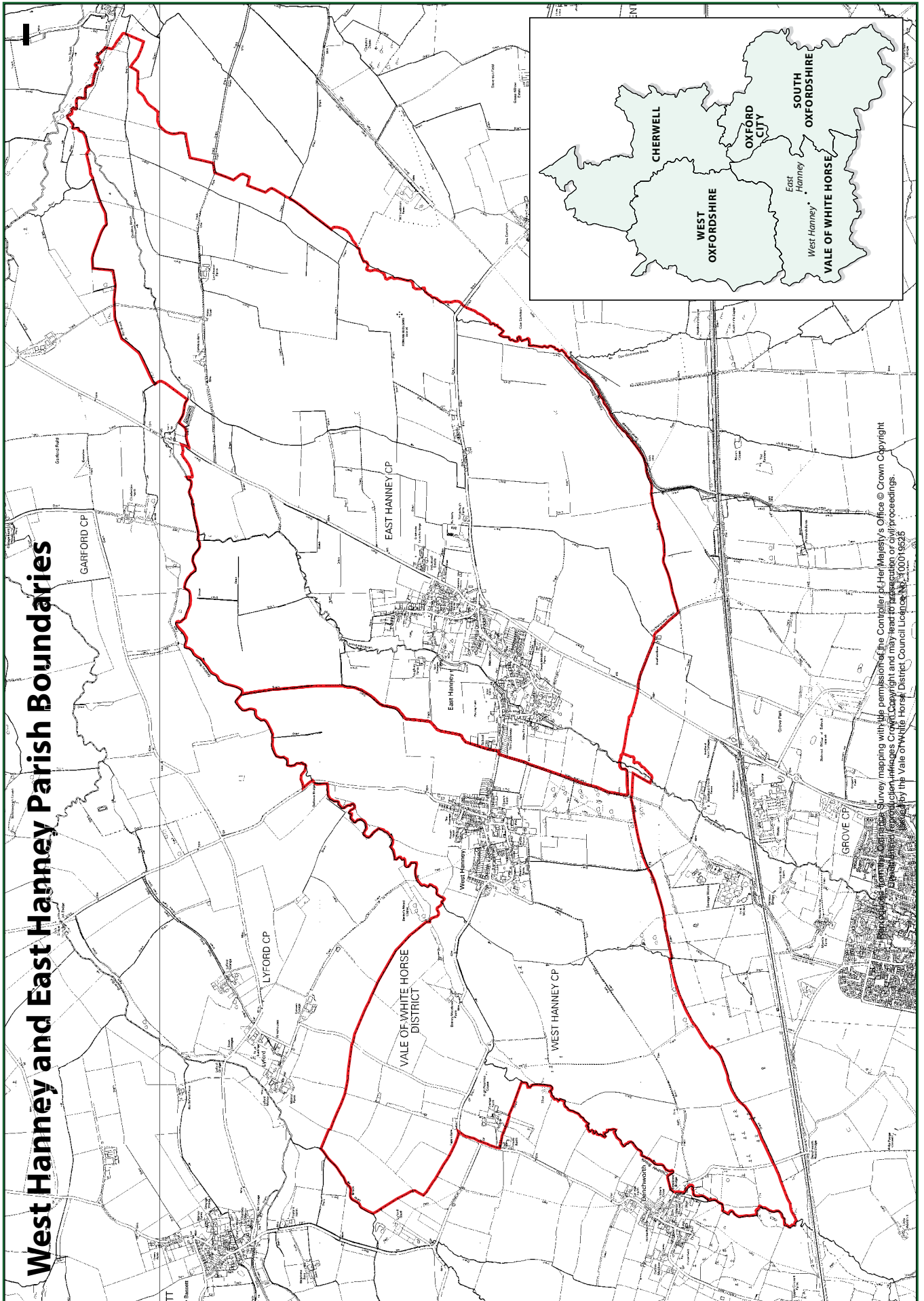
## **Other bodies**

East Hanney Parish Council & John Hedderley (Clerk), West Hanney Parish Council & Alice Grecian (Clerk), St. James C of E Primary School & Jayne Snewin (Headteacher), Abingdon College (Dan Blackman, Matt Bonner, Will Vaste), Hanney Community Shop, Hanney News & Jenny Corps (Editor), Hanney War Memorial Hall (Andy Wilson & Angus Clark), Oxfordshire Rural Community Council, (Anton Nath), Oxfordshire Community Foundation (Wally Cox), Royal British Legion, St James The Great Church, The Black Horse public house & The Plough public house.

## **Appendix 1 (Full Questionnaire Results)**

## **Appendix 2 (“Other Comments” from the Questionnaire & Consultations)**

Appendices are only available in electronic form from [www.thehanneys.org](http://www.thehanneys.org) website.



Survey mapping with his permission the Controller of Her Majesty's Office © Crown Copyright  
 Ordnance Survey. All rights reserved. Crown Copyright and may not be published or reproduced  
 without the prior written permission of the Controller of Her Majesty's Stationery Office (000) 19236  
 by the Vale of White Horse District Council Licensing Officer.

